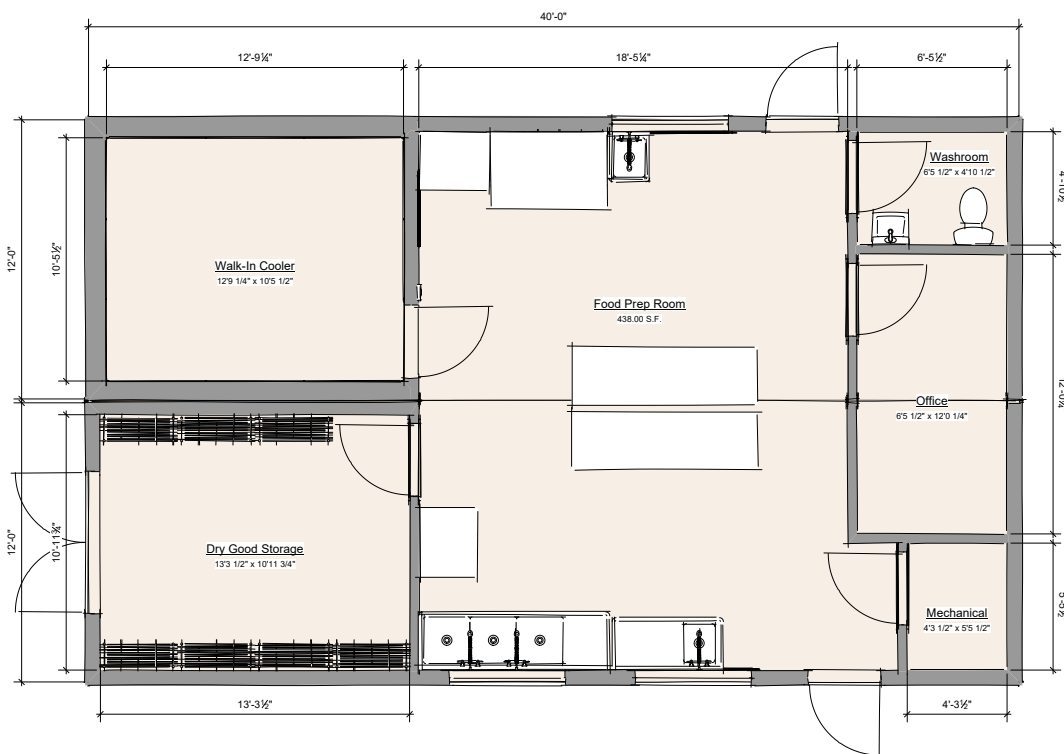


24' x 40'

Food Hub

Designed for the processing, storage, and distribution of game, fish, and other foods, this building features a walk in cooler / freezer, large workroom, office, washroom, and big doors.



TOTAL AREA
960 SQ.FT.

OVERALL
24' x 40' x 11'7"

FOR MORE INFORMATION:

250-753-8550

sales@cipmodular.ca

1868 Fielding Road
Nanaimo, BC V9X 1T5



24' x 40' Food Hub

General Specifications

EXTERIOR SIDING

7/8" Corrugated Tin; 2 tone: Charcoal & Copper; black trims

INTERIOR WALLS

Tape and filled 5/8" drywall, painted to suit

WINDOWS

5' x 2' Horizontal Fixed; black exterior vinyl

EXTERIOR DOORS

Hollow metal insulated doors, black; comes with passage set and deadbolt

PARTITION DOORS

Hollow core, prefinished white; comes with passage set

ROOF

EPDM rubber membrane; black; white termination bar

FLOOR

Vinyl sheet flooring

CEILING

Tape and filled 5/8" drywall

HEATING/COOLING

Electric up-flow furnace; exposed venting; optional A/C or heat pump available

LIGHTING

LED 2' x 4' flat panels; LED low profile pot lights

ELECTRICAL

120/240 volt single phase; duplex wall receptacles; tel/data conduits and patch panel installed; jacks and wiring not included

PLUMBING

Washrooms: toilet and sink typical; one H/C accessible space; comes with 2 gal. hot water tank

Kitchen: Customized kitchen equipment available

**BUILT IN ACCORDANCE
WITH CSA A277**



Intertek



Intertek

The above specifications are subject to change / customization.



