

# The Rowan

## 14'x60' Modular Washcar w/ Laundry

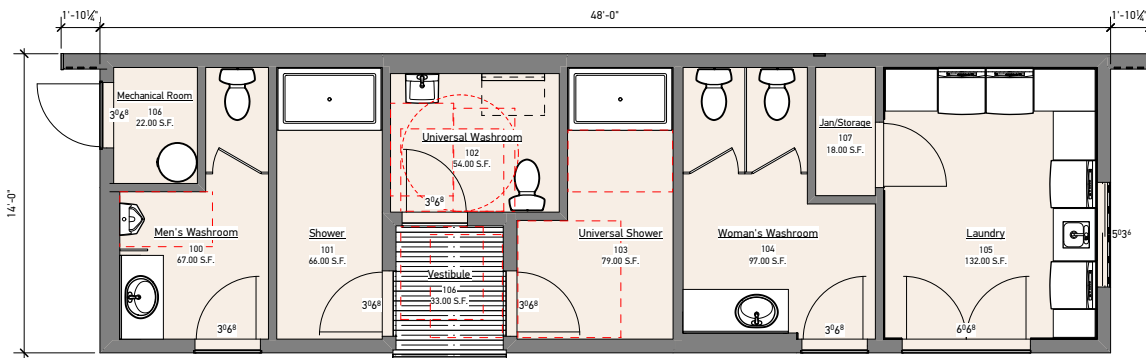
The Rowan is a 14' x 60' modular washcar with fully accessible washrooms, showers, and laundry facilities. Built to CSA A277 standards, it delivers dignified, barrier-free amenities for communities, crews, and public spaces alike — from marinas and parks to schools, event venues, and remote worksites. Durable, code-compliant, and ready to serve without compromise.

### Includes:

- Barrier-free vestibule with wide-entry access
- Universal washroom and shower with accessibility features
- Separate men's and women's washrooms for higher capacity
- Private shower stalls for comfort and privacy
- Integrated laundry room with commercial-grade appliances
- Janitorial/storage space for maintenance



### FLOORPLAN



TOTAL AREA  
**840 SQ.FT.**

OVERALL  
**14' x 60'**

### FOR MORE INFORMATION:

250-753-8550

[sales@cipmodular.ca](mailto:sales@cipmodular.ca)

1868 Fielding Road  
Nanaimo, BC V9X 1T5

